

CONTENTS

SWING DOOR HARDWARE

PREMIERE 1000

FEATURES AND BENEFITS

ACTIVE - 3 POINT SHOOT BOLT LOCKING SYSTEM

ACTIVE - 3 POINT HOOK LOCKING SYSTEM

ACTIVE - 5 POINT LOCKING SYSTEM

PASSIVE - LOCKING SYSTEM

GEARBOX STRIKES / SHOOT BOLT STRIKES / TONGUE OR RHINO HOOK STRIKES

ADJUSTABLE STRIKES / OTHER ACCESSORIES / MOUNTING SCREWS

RHINO HOOK / EXTENSIONS

PREMIER 1000 FABRICATION DRAWING

PREMIERE 1000

FEATURES & BENEFITS

HIGH SECURITY MULTI-POINT LOCKING SYSTEM.

AVAILABLE IN 1.38" (35MM) AND 1.77" (45MM) BACKSETS.

SUITABLE FOR DOORS WITH 0.63" (16MM) AND 0.79" (20MM) AMERICAN OR EURO GROVE ROUTING.

ACCEPTS HANDLE SETS WITH 3.62" (92MM) HOLE SPACING
(CENTER OF SPINDLE TO CENTER OF KEY CYLINDER).

PASSIVE LOCK ACCEPTS ACTIVE DEAD BOLT AND LATCH BOLT.

SNIB FEATURE ON ALL LOCKS.

HANDLE HEIGHT CAN BE CUSTOMIZED TO YOUR NEEDS.

OVERALL LOCK LENGTH CAN BE CUSTOMIZED TO FIT YOUR DOOR PRECISELY.

DUAL CUT-DOWN LOCK SYSTEMS ARE AVAILABLE.



LEGEND	
HH	HANDLE HEIGHT
BS	BACK SET
FB	FACE BAR
BH	BOTTOM HOOK
TH	TOP HOOK

MATERIALS	
DEAD BOLT	FORGED BRASS
DRIVE BAR	STAINLESS STEEL
FACE BAR	STAINLESS STEEL
GEARBOX	MILD STEEL PLATED
SHOOT BOLT	STAINLESS STEEL
HOOK	FORGED BRASS

PREMIERE 1000

ACTIVE - 3 POINT SHOOT BOLT LOCKING SYSTEM

BOX QTY: 10

LOCKING FEATURES:

- (1) 0.87" DEAD BOLT
- (2) SHOOT BOLTS



SHOOT
BOLT

LEGEND

HH	HANDLE HEIGHT
BS	BACK SET
FB	FACE BAR

HANDLE HEIGHT AT 32"

LOCK SIZE	PANEL LENGTH	
	MIN	MAX
SMALL	65.0	78.5
MED.	78.0	91.5
LARGE	91.0	104.5

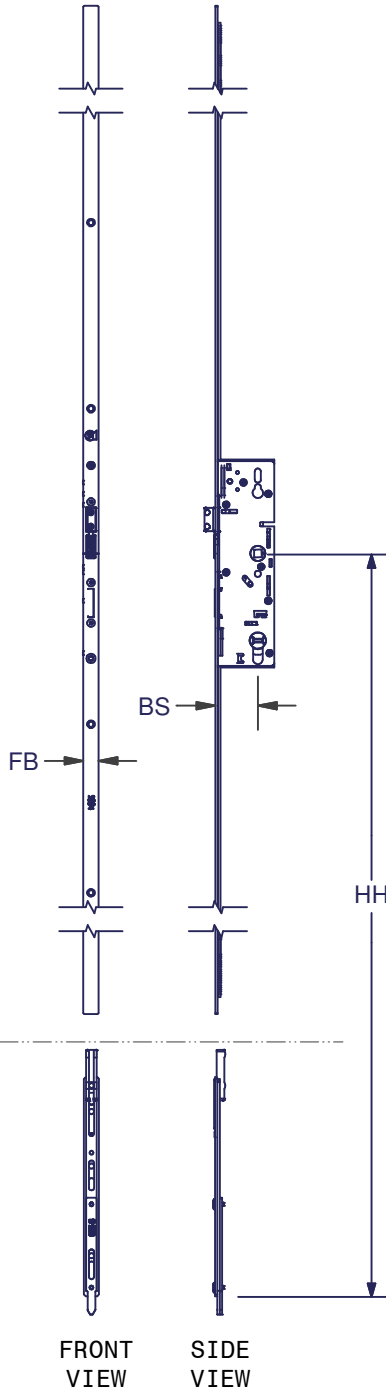
HANDLE HEIGHT AT 36"

LOCK SIZE	PANEL LENGTH	
	MIN	MAX
SMALL	69.0	82.5
MED.	82.0	95.5
LARGE	95.0	108.5

HANDLE HEIGHT AT 40"

LOCK SIZE	PANEL LENGTH	
	MIN	MAX
SMALL	73.0	86.5
MED.	86.0	99.5
LARGE	99.0	112.5

NOTE ONE (1) ASSEMBLY AND TWO (2) SHOOT TIPS REQUIRED FOR THIS APPLICATION



GEARBOX	BS	FB	LOCK SIZE	ITEM NUMBER	
				ASSEMBLY	SHOOT TIP
AMER. (DUAL CUT-DOWN)	35mm 1.378"	16mm 0.63"	SMALL	*7035-1994-81	5670-81
			MED.	*7035-1995-81	5670-81
			LARGE	*7035-1996-81	5670-81
		20mm 0.787"	SMALL	*7035-1294-80-81	5670-80-81
			MED.	*7035-1295-80-81	5670-80-81
			LARGE	*7035-1296-80-81	5670-80-81
	45mm 1.772"	16mm 0.63"	SMALL	7045-1994-81	5670-81
			MED.	7045-1995-81	5670-81
			LARGE	7045-1996-81	5670-81
		20mm 0.787"	SMALL	7045-1294-80-81	5670-80-81
			MED.	7045-1295-80-81	5670-80-81
			LARGE	7045-1296-80-81	5670-80-81
EURO. (DUAL CUT-DOWN)	35mm 1.378"	16mm 0.63"	SMALL	*7035-1994-81-EC	5670-81
			MED.	*7035-1995-81-EC	5670-81
			LARGE	*7035-1996-81-EC	5670-81
		20mm 0.787"	SMALL	*7035-1294-80-81-EC	5670-80-81
			MED.	*7035-1295-80-81-EC	5670-80-81
			LARGE	*7035-1296-80-81-EC	5670-80-81
	45mm 1.772"	16mm 0.63"	SMALL	*7045-1994-81-EC	5670-81
			MED.	*7045-1995-81-EC	5670-81
			LARGE	*7045-1996-81-EC	5670-81
		20mm 0.787"	SMALL	*7045-1294-80-81-EC	5670-80-81
			MED.	*7045-1295-80-81-EC	5670-80-81
			LARGE	*7045-1296-80-81-EC	5670-80-81

* ITEMS NOT IN SYSTEM AS OF REVISION DATE.

DIMENSIONS ARE FOR REFERENCE ONLY AND ARE IN INCHES UNLESS OTHERWISE NOTED.
CONTACT OUR ENGINEERING DEPARTMENT WITH SPECIFIC APPLICATION QUESTIONS OR REQUIREMENTS.
NOT ALL COMBINATIONS LISTED ARE CURRENTLY STOCKED, EXTRA LEAD TIME MAY BE REQUIRED.

PREMIERE 1000

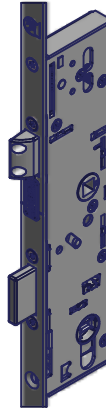
ACTIVE - 3 POINT HOOK LOCKING SYSTEM



LOCKING FEATURES:

BOX QTY: 10

- (1) 0.87" DEAD BOLT
(2) HOOKS

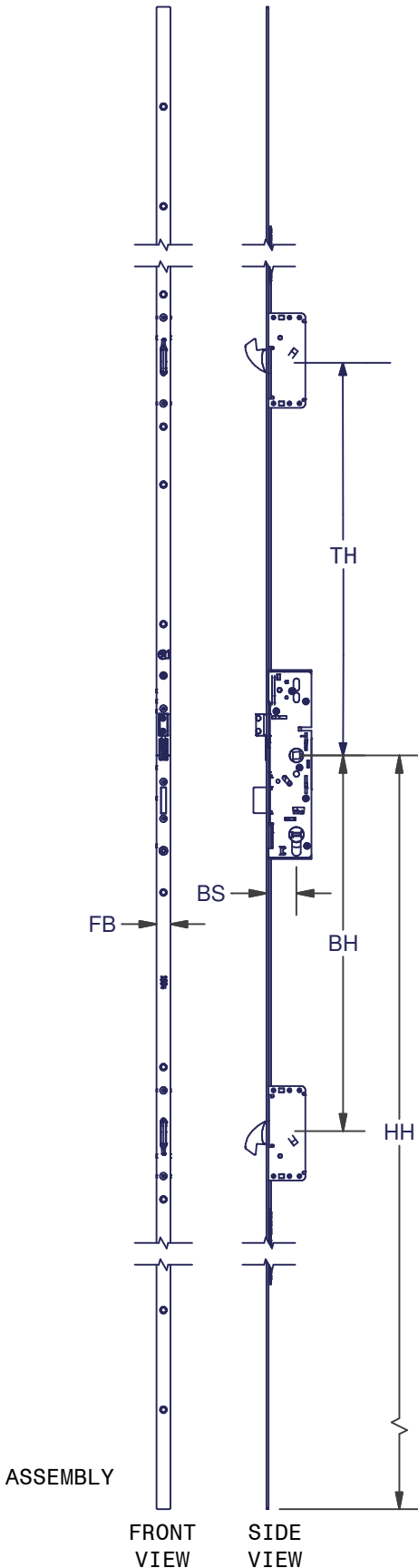


LEGEND	
HH	HANDLE HEIGHT
BS	BACK SET
FB	FACE BAR
BH	BOTTOM HOOK
TH	TOP HOOK

HANDLE HEIGHT AT 32"		
LOCK SIZE	PANEL LENGTH	
	MIN	MAX
SMALL	65.0	78.5
MED.	78.0	91.5
LARGE	91.0	104.5

HANDLE HEIGHT AT 36"		
LOCK SIZE	PANEL LENGTH	
	MIN	MAX
SMALL	69.0	82.5
MED.	82.0	95.5
LARGE	95.0	108.5

HANDLE HEIGHT AT 40"		
LOCK SIZE	PANEL LENGTH	
	MIN	MAX
SMALL	73.0	86.5
MED.	86.0	99.5
LARGE	99.0	112.5



GEARBOX	BS	FB	LOCK SIZE	ITEM NUMBER	HOOK LOCATION	
				ASSEMBLY	BH	TH
AMER. (DUAL CUT-DOWN)	35mm 1.378"	16mm 0.63"	SMALL	7135-1984-81	17.32	18.11
			MED.	*7135-1985-81	17.32	27.36
			LARGE	*7135-1986-81	17.32	33.86
		20mm 0.787"	SMALL	*7135-1284-80-81	17.32	18.11
			MED.	7135-1285-80-81	17.32	27.36
			LARGE	7135-1286-80-81	17.32	33.86
	45mm 1.772"	16mm 0.63"	SMALL	7145-1984-81	17.32	18.11
			MED.	7145-1985-81	17.32	27.36
			LARGE	7145-1986-81	17.32	33.86
		20mm 0.787"	SMALL	7145-1284-80-81	17.32	18.11
			MED.	7145-1285-80-81	17.32	27.36
			LARGE	7145-1286-80-81	17.32	33.86
EURO. (DUAL CUT-DOWN)	35mm 1.378"	16mm 0.63"	SMALL	7135-1984-81-EC	17.32	18.11
			MED.	*7135-1985-81-EC	17.32	27.36
			LARGE	*7135-1986-81-EC	17.32	33.86
		20mm 0.787"	SMALL	*7135-1284-80-81-EC	17.32	18.11
			MED.	7135-1285-80-81-EC	17.32	27.36
			LARGE	7135-1286-80-81-EC	17.32	33.86
	45mm 1.772"	16mm 0.63"	SMALL	7145-1984-81-EC	17.32	18.11
			MED.	7145-1985-81-EC	17.32	27.36
			LARGE	7145-1986-81-EC	17.32	33.86
		20mm 0.787"	SMALL	7145-1284-80-81-EC	17.32	18.11
			MED.	7145-1285-80-81-EC	17.32	27.36
			LARGE	7145-1286-80-81-EC	17.32	33.86

* ITEMS NOT IN SYSTEM AS OF REVISION DATE.

DIMENSIONS ARE FOR REFERENCE ONLY AND ARE IN INCHES UNLESS OTHERWISE NOTED.
CONTACT OUR ENGINEERING DEPARTMENT WITH SPECIFIC APPLICATION QUESTIONS OR REQUIREMENTS.
NOT ALL COMBINATIONS LISTED ARE CURRENTLY STOCKED, EXTRA LEAD TIME MAY BE REQUIRED.

PREMIERE 1000



ACTIVE - 5 POINT LOCKING SYSTEM

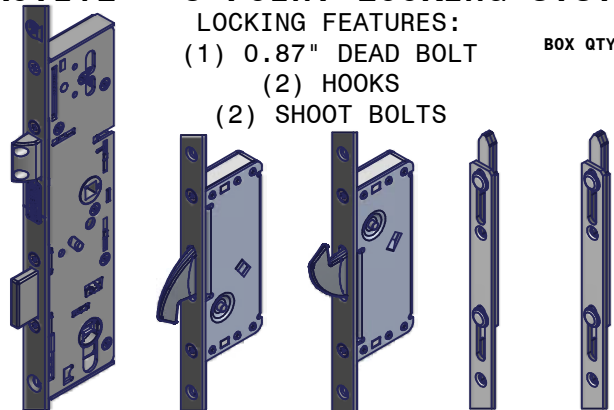
LOCKING FEATURES:

- (1) 0.87" DEAD BOLT
- (2) HOOKS
- (2) SHOOT BOLTS

BOX QTY: 10

SHOOT
BOLT

LEGEND	
HH	HANDLE HEIGHT
BS	BACK SET
FB	FACE BAR
BH	BOTTOM HOOK
TH	TOP HOOK

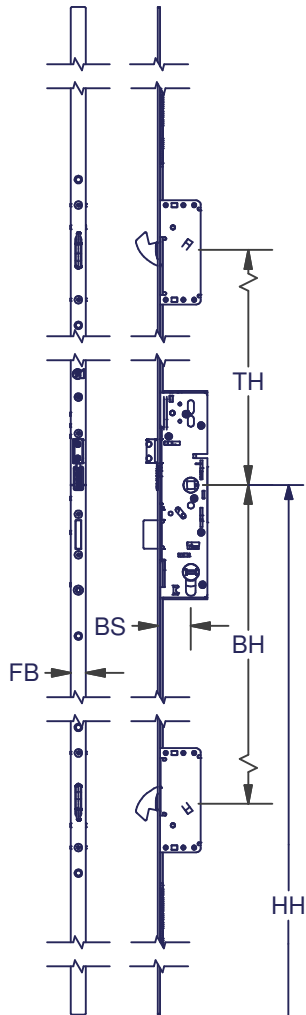


HANDLE HEIGHT AT 32"		
LOCK SIZE	PANEL LENGTH	
	MIN	MAX
SMALL	65.0	78.5
MED.	78.0	91.5
LARGE	91.0	104.5

HANDLE HEIGHT AT 36"		
LOCK SIZE	PANEL LENGTH	
	MIN	MAX
SMALL	69.0	82.5
MED.	82.0	95.5
LARGE	95.0	108.5

HANDLE HEIGHT AT 40"		
LOCK SIZE	PANEL LENGTH	
	MIN	MAX
SMALL	73.0	86.5
MED.	86.0	99.5
LARGE	99.0	112.5

NOTE ONE (1) ASSEMBLY AND TWO (2) SHOOT TIPS REQUIRED FOR THIS APPLICATION



SHOOT
BOLT

FRONT VIEW
SIDE VIEW

GEARBOX	BS	FB	LOCK SIZE	ITEM NUMBER		HOOK LOCATION	
				ASSEMBLY	SHOOT TIP	BH	TH
AMER. (DUAL CUT-DOWN)	35mm 1.378"	16mm 0.63"	SMALL	*7435-1984-81	5670-81	17.32	18.11
			MED.	*7435-1985-81	5670-81	17.32	27.36
			LARGE	*7435-1986-81	5670-81	17.32	33.86
		20mm 0.787"	SMALL	*7435-1284-80-81	5670-80-81	17.32	18.11
			MED.	*7435-1285-80-81	5670-80-81	17.32	27.36
			LARGE	*7435-1286-80-81	5670-80-81	17.32	33.86
	45mm 1.772"	16mm 0.63"	SMALL	*7445-1984-81	5670-81	17.32	18.11
			MED.	*7445-1985-81	5670-81	17.32	27.36
			LARGE	*7445-1986-81	5670-81	17.32	33.86
		20mm 0.787"	SMALL	7445-1284-80-81	5670-80-81	17.32	18.11
			MED.	7445-1285-80-81	5670-80-81	17.32	27.36
			LARGE	*7445-1286-80-81	5670-80-81	17.32	33.86
EURO. (DUAL CUT-DOWN)	35mm 1.378"	16mm 0.63"	SMALL	*7435-1984-81-EC	5670-81	17.32	18.11
			MED.	*7435-1985-81-EC	5670-81	17.32	27.36
			LARGE	*7435-1986-81-EC	5670-81	17.32	33.86
		20mm 0.787"	SMALL	*7435-1284-80-81-EC	5670-80-81	17.32	18.11
			MED.	*7435-1285-80-81-EC	5670-80-81	17.32	27.36
			LARGE	*7435-1286-80-81-EC	5670-80-81	17.32	33.86
	45mm 1.772"	16mm 0.63"	SMALL	*7445-1984-81-EC	5670-81	17.32	18.11
			MED.	*7445-1985-81-EC	5670-81	17.32	27.36
			LARGE	*7445-1986-81-EC	5670-81	17.32	33.86
		20mm 0.787"	SMALL	7445-1284-80-81-EC	5670-80-81	17.32	18.11
			MED.	7445-1285-80-81-EC	5670-80-81	17.32	27.36
			LARGE	*7445-1286-80-81-EC	5670-80-81	17.32	33.86

* ITEMS NOT IN SYSTEM AS OF REVISION DATE.

DIMENSIONS ARE FOR REFERENCE ONLY AND ARE IN INCHES UNLESS OTHERWISE NOTED.
CONTACT OUR ENGINEERING DEPARTMENT WITH SPECIFIC APPLICATION QUESTIONS OR REQUIREMENTS.
NOT ALL COMBINATIONS LISTED ARE CURRENTLY STOCKED, EXTRA LEAD TIME MAY BE REQUIRED.

PREMIERE 1000

PASSIVE - LOCKING SYSTEM

BOX QTY: 10



LEGEND	
HH	HANDLE HEIGHT
BS	BACK SET
FB	FACE BAR



LOCKING FEATURES:

(2) SHOOT BOLTS

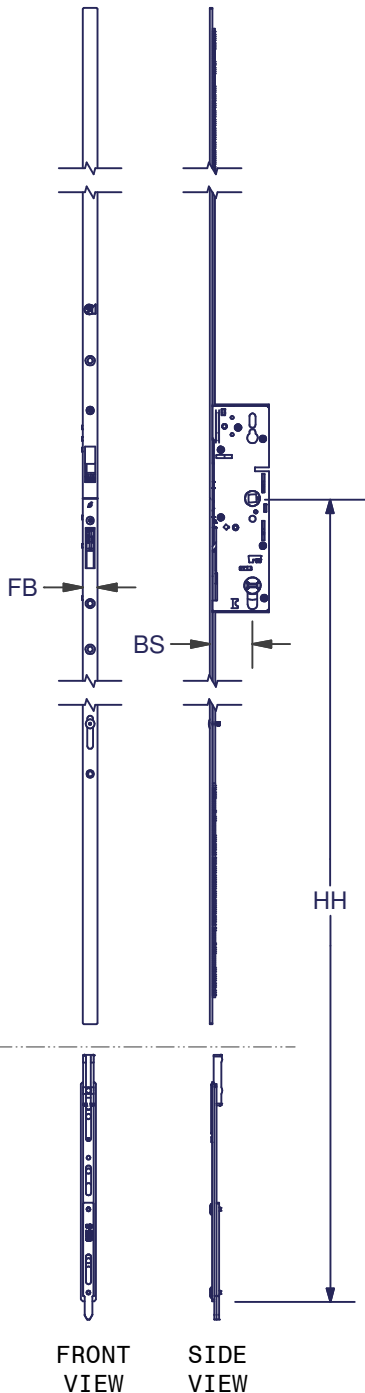
SHOOT
BOLT

HANDLE HEIGHT AT 32"		
LOCK SIZE	PANEL LENGTH	
	MIN	MAX
SMALL	65.0	78.5
MED.	78.0	91.5
LARGE	91.0	104.5

HANDLE HEIGHT AT 36"		
LOCK SIZE	PANEL LENGTH	
	MIN	MAX
SMALL	69.0	82.5
MED.	82.0	95.5
LARGE	95.0	108.5

HANDLE HEIGHT AT 40"		
LOCK SIZE	PANEL LENGTH	
	MIN	MAX
SMALL	73.0	86.5
MED.	86.0	99.5
LARGE	99.0	112.5

NOTE ONE (1) ASSEMBLY AND TWO (2) SHOOT TIPS REQUIRED FOR THIS APPLICATION



SHOOT
BOLT

FRONT
VIEW

SIDE
VIEW

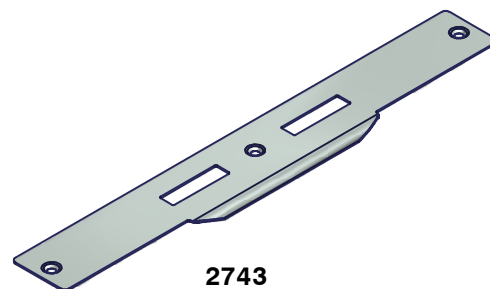
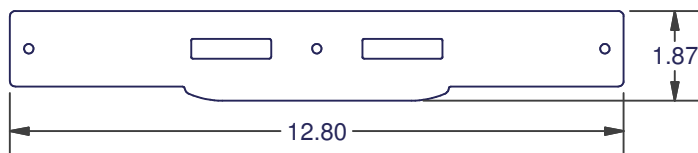
GEARBOX	BS	FB	LOCK SIZE	ITEM NUMBER	
				ASSEMBLY	SHOOT TIP
AMER. (DUAL CUT-DOWN)	35mm 1.378"	16mm 0.63"	SMALL	*7535-1974-81	5670-81
			MED.	*7535-1975-81	5670-81
			LARGE	*7535-1976-81	5670-81
		20mm 0.787"	SMALL	*7535-1274-80-81	5670-80-81
			MED.	*7535-1275-80-81	5670-80-81
			LARGE	*7535-1276-80-81	5670-80-81
	45mm 1.772"	16mm 0.63"	SMALL	7545-1974-81	5670-81
			MED.	7545-1975-81	5670-81
			LARGE	7545-1976-81	5670-81
		20mm 0.787"	SMALL	7545-1274-80-81	5670-80-81
			MED.	7545-1275-80-81	5670-80-81
			LARGE	7545-1276-80-81	5670-80-81
EURO. (DUAL CUT-DOWN)	35mm 1.378"	16mm 0.63"	SMALL	*7535-1974-81-EC	5670-81
			MED.	*7535-1975-81-EC	5670-81
			LARGE	*7535-1976-81-EC	5670-81
		20mm 0.787"	SMALL	*7535-1274-80-81-EC	5670-80-81
			MED.	*7535-1275-80-81-EC	5670-80-81
			LARGE	*7535-1276-80-81-EC	5670-80-81
	45mm 1.772"	16mm 0.63"	SMALL	7545-1974-81-EC	5670-81
			MED.	7545-1975-81-EC	5670-81
			LARGE	7545-1976-81-EC	5670-81
		20mm 0.787"	SMALL	*7545-1274-80-81-EC	5670-80-81
			MED.	*7545-1275-80-81-EC	5670-80-81
			LARGE	*7545-1276-80-81-EC	5670-80-81

* ITEMS NOT IN SYSTEM AS OF REVISION DATE.

DIMENSIONS ARE FOR REFERENCE ONLY AND ARE IN INCHES UNLESS OTHERWISE NOTED.
CONTACT OUR ENGINEERING DEPARTMENT WITH SPECIFIC APPLICATION QUESTIONS OR REQUIREMENTS.
NOT ALL COMBINATIONS LISTED ARE CURRENTLY STOCKED, EXTRA LEAD TIME MAY BE REQUIRED.

PREMIERE 1000

GEARBOX STRIKES



2743

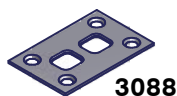


GEARBOX STRIKES			
ITEM #	DESCRIPTION	SUBSTRATE	BOX QTY
2743-00	CENTER STRIKE NON-AJDUSTABLE	STEEL	50
2743-77	CENTER STRIKE NON-AJDUSTABLE - BRUSHED CHROME	STEEL	50

SHOOT BOLT STRIKES



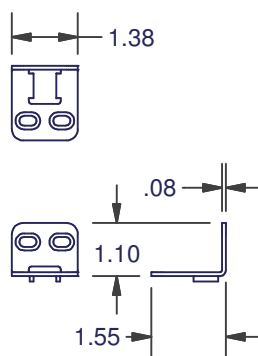
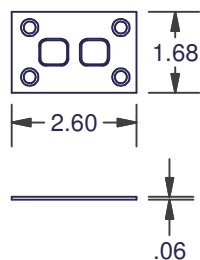
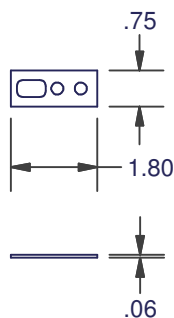
3087



3088

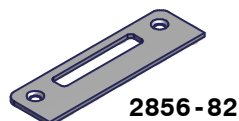


3108

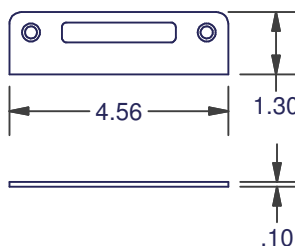


SHOOT BOLT STRIKES			
ITEM #	DESCRIPTION	SUBSTRATE	BOX QTY
3087	SINGLE SHOOT BOLT STRIKE - STAINLESS STEEL	304 SS	50
3088	DOUBLE SHOOT BOLT STRIKE - STAINLESS STEEL	304 SS	50
3108-82	CORNER SHOOT BOLT STRIKE - BRUSHED STAINLESS STEEL	304 SS	100

TONGUE OR RHINO HOOK STRIKES



2856-82



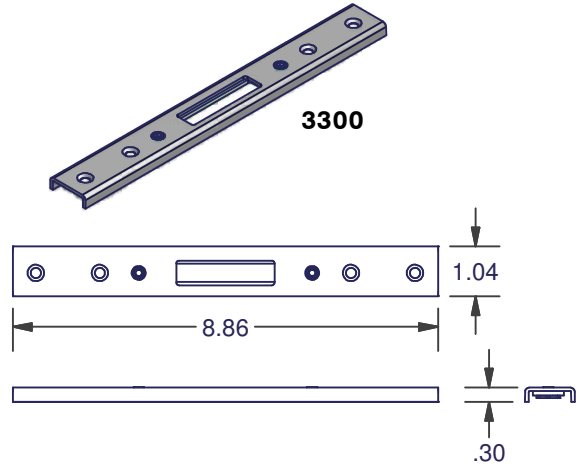
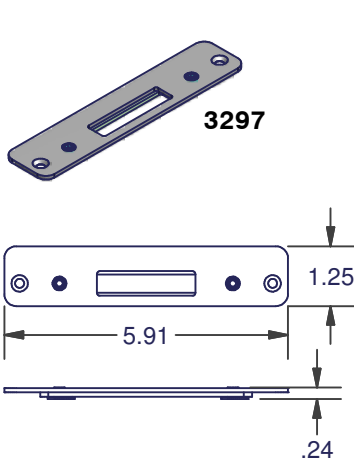
TONGUE OR RHINO HOOK STRIKES			
ITEM #	DESCRIPTION	SUBSTRATE	BOX QTY
2856-82	STRIKE - BRUSHED STAINLESS STEEL	304 SS	50

DIMENSIONS ARE FOR REFERENCE ONLY AND ARE IN INCHES UNLESS OTHERWISE NOTED.
CONTACT OUR ENGINEERING DEPARTMENT WITH SPECIFIC APPLICATION QUESTIONS OR REQUIREMENTS.
NOT ALL COMBINATIONS LISTED ARE CURRENTLY STOCKED, EXTRA LEAD TIME MAY BE REQUIRED.

PREMIERE 1000

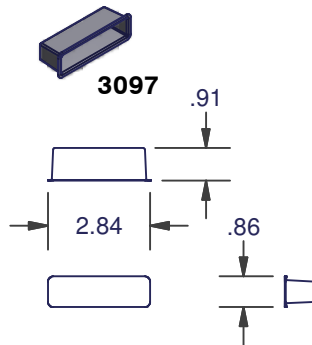
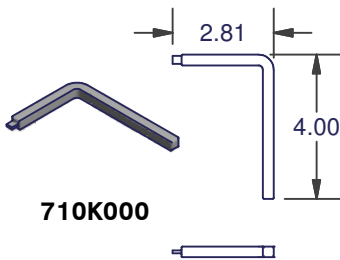
- CAN BE USED WITH RHINO HOOKS OR SHOOT BOLTS.

ADJUSTABLE STRIKES



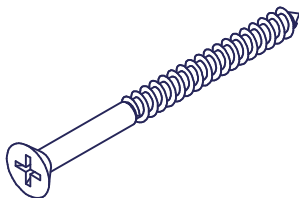
ADJUSTABLE STRIKES			
ITEM #	DESCRIPTION	SUBSTRATE	BOX QTY
3297	ADJUSTABLE STRIKE FLAT	304 SS	100
3300	ADJUSTABLE STRIKE FORMED	304 SS	100

OTHER ACCESSORIES

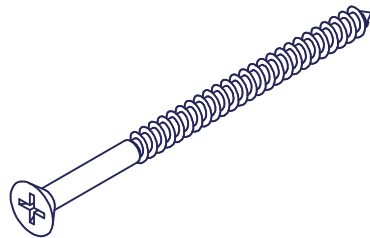


OTHER ACCESSORIES		
ITEM #	DESCRIPTION	BOX QTY
710K000	CONSTRUCTION HANDLE	50
3097	DUST CAP	50

MOUNTING SCREWS



#8 X 2" WOOD SCREW
3203-84

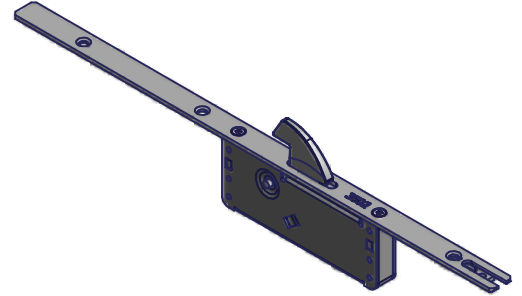
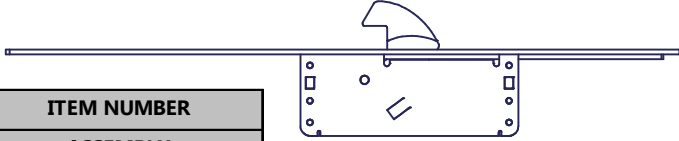


#8 X 2 1/2" WOOD SCREW
3225

DIMENSIONS ARE FOR REFERENCE ONLY AND ARE IN INCHES UNLESS OTHERWISE NOTED.
CONTACT OUR ENGINEERING DEPARTMENT WITH SPECIFIC APPLICATION QUESTIONS OR REQUIREMENTS.
NOT ALL COMBINATIONS LISTED ARE CURRENTLY STOCKED, EXTRA LEAD TIME MAY BE REQUIRED.

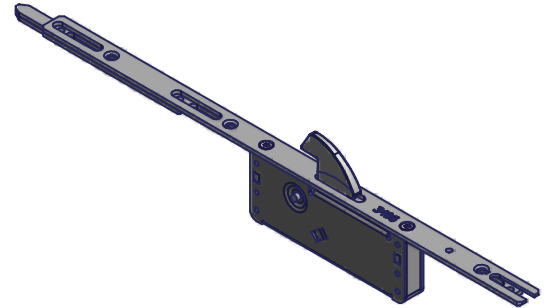
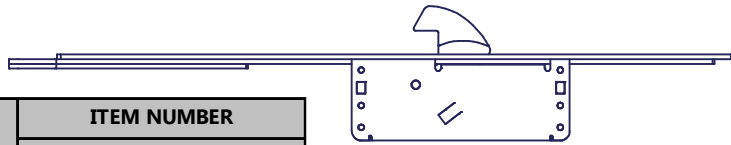
PREMIERE 1000

RHINO HOOK WITHOUT SHOOT TIP



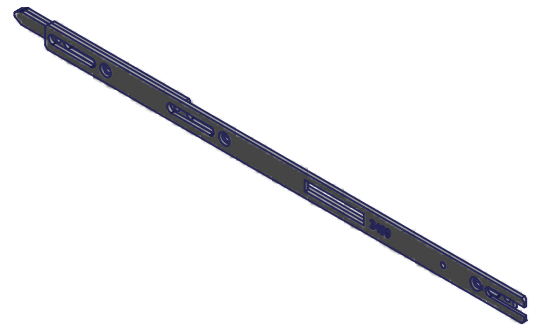
FB	ITEM NUMBER	
	ASSEMBLY	
16mm	3502-16H	
0.63"		
20mm	3503-20H	
0.787"		

RHINO HOOK WITH SHOOT TIPS



FB	ITEM NUMBER	
	ASSEMBLY	
16mm	3496-16H	
0.63"		
20mm	3497-20H	
0.787"		

RHINO EXTENSION PASSIVE



FB	ITEM NUMBER	
	ASSEMBLY	
16mm	3499-16	
0.63"		
20mm	3500-20	
0.787"		

DIMENSIONS ARE FOR REFERENCE ONLY AND ARE IN INCHES UNLESS OTHERWISE NOTED.
CONTACT OUR ENGINEERING DEPARTMENT WITH SPECIFIC APPLICATION QUESTIONS OR REQUIREMENTS.
NOT ALL COMBINATIONS LISTED ARE CURRENTLY STOCKED, EXTRA LEAD TIME MAY BE REQUIRED.

PREMIER 1000 FABRICATION DRAWING

DIMENSIONS ARE FOR REFERENCE ONLY AND ARE IN INCHES UNLESS OTHERWISE NOTED.
CONTACT OUR ENGINEERING DEPARTMENT WITH SPECIFIC APPLICATION QUESTIONS OR REQUIREMENTS.
NOT ALL COMBINATIONS LISTED ARE CURRENTLY STOCKED, EXTRA LEAD TIME MAY BE REQUIRED.