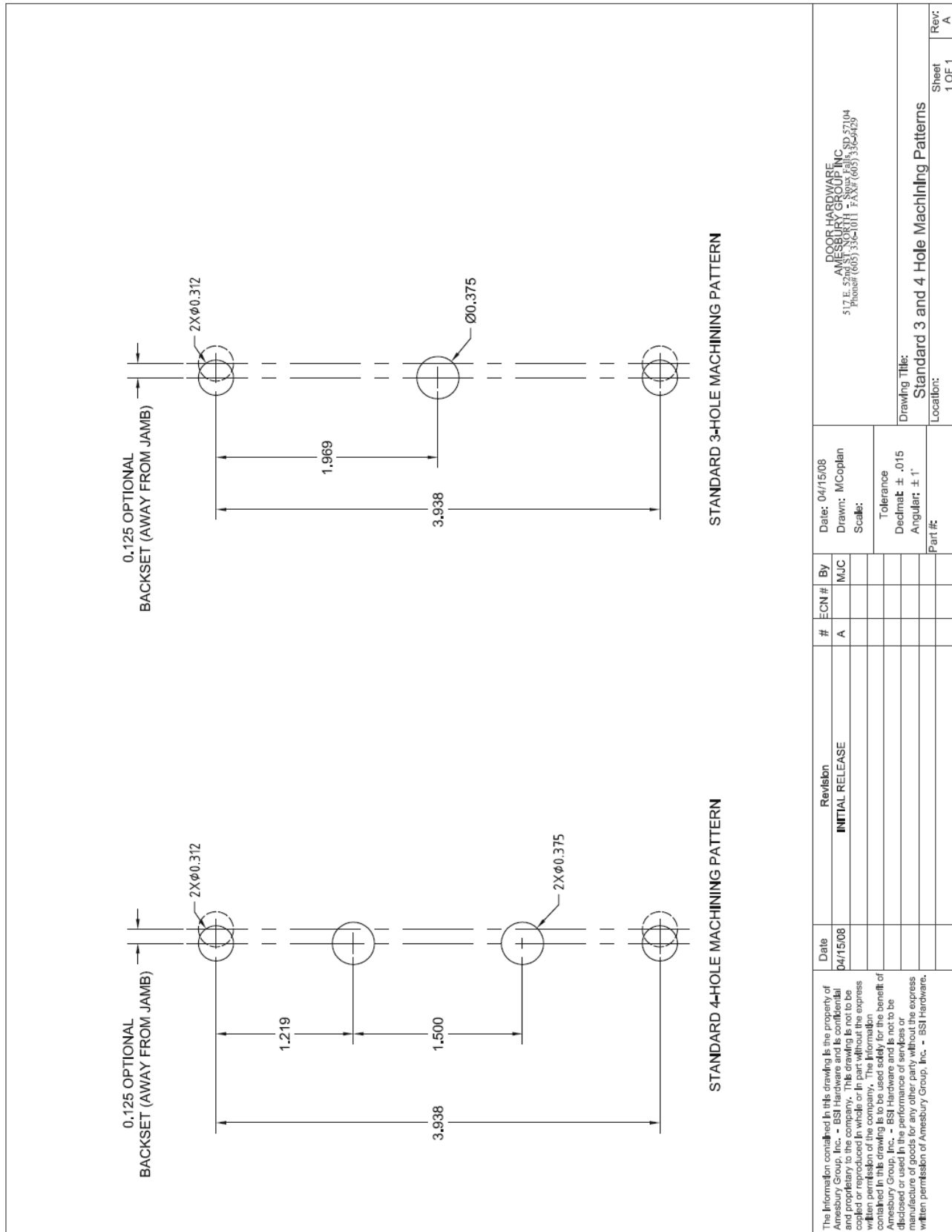


SLIDING DOOR HANDLES

SLIDING DOOR 3 & 4 HOLE MACHINING PATTERN STANDARD



Date: 04/15/08 Drawn: MCoplan Scale:		DOOR HARDWARE AMESBURY GROUP, INC. 517 E. 57th Street Phone: (603) 336-0111 FAX: (603) 336-5429	
#	ECN #	By	Part #:
A		MJC	
Revision INITIAL RELEASE		Tolerance Decimat: ± .015 Angular: ± 1°	
Date 04/15/08		Drawing Title: Standard 3 and 4 Hole Machining Patterns	
The information contained in this drawing is the property of Amesbury Group, Inc. - BSI Hardware and is confidential and proprietary to the company. This drawing is not to be reproduced, stored in a retrieval system, or transmitted in any form or by any means, electronic, mechanical, photocopying, recording, or by any information storage and retrieval system, without the express written permission of the company. The information contained in this drawing is to be used solely for the benefit of Amesbury Group, Inc. - BSI Hardware and is not to be disclosed or used in the performance of services or manufacture of goods for any other party without the express written permission of Amesbury Group, Inc. - BSI Hardware.		Location: Sheet 1 OF 1	
		Rev: A	

DIMENSIONS ARE FOR REFERENCE ONLY AND ARE IN INCHES UNLESS OTHERWISE NOTED.
 CONTACT OUR ENGINEERING DEPARTMENT WITH SPECIFIC APPLICATION QUESTIONS OR REQUIREMENTS.
 NOT ALL COMBINATIONS LISTED ARE CURRENTLY STOCKED, EXTRA LEAD TIME MAY BE REQUIRED.